

Fascinating Butterflies

Himesh Jayasinghe

Butterfly Conservation Society of Sri Lanka



Butterflies are

o Type of insects

3 main body segments

3 pairs of jointed legs

chitinous exoskeleton

pair of compound eyes

pair of antennae

o Belongs to order Lepidoptera

2 pairs of scaly wings

scaly body

proboscis

complete metamorphosis

Classification

Order

Lepidoptera
174, 250 species

Super Family

Papilionoidea

Families

Papilionidae	15 species
Pieridae	28 species
Nymphalidae	68 species
Riodinidae	01 species
Lycaenidae	84 species
Hesperiidae	49 species

Difference between a Moth & a Butterfly

True Butterflies



Blue Pansy



Common Silverline

Difference between a Moth & a Butterfly

Skipper Butterflies



Branded Orange Awlet



Hedge Hopper

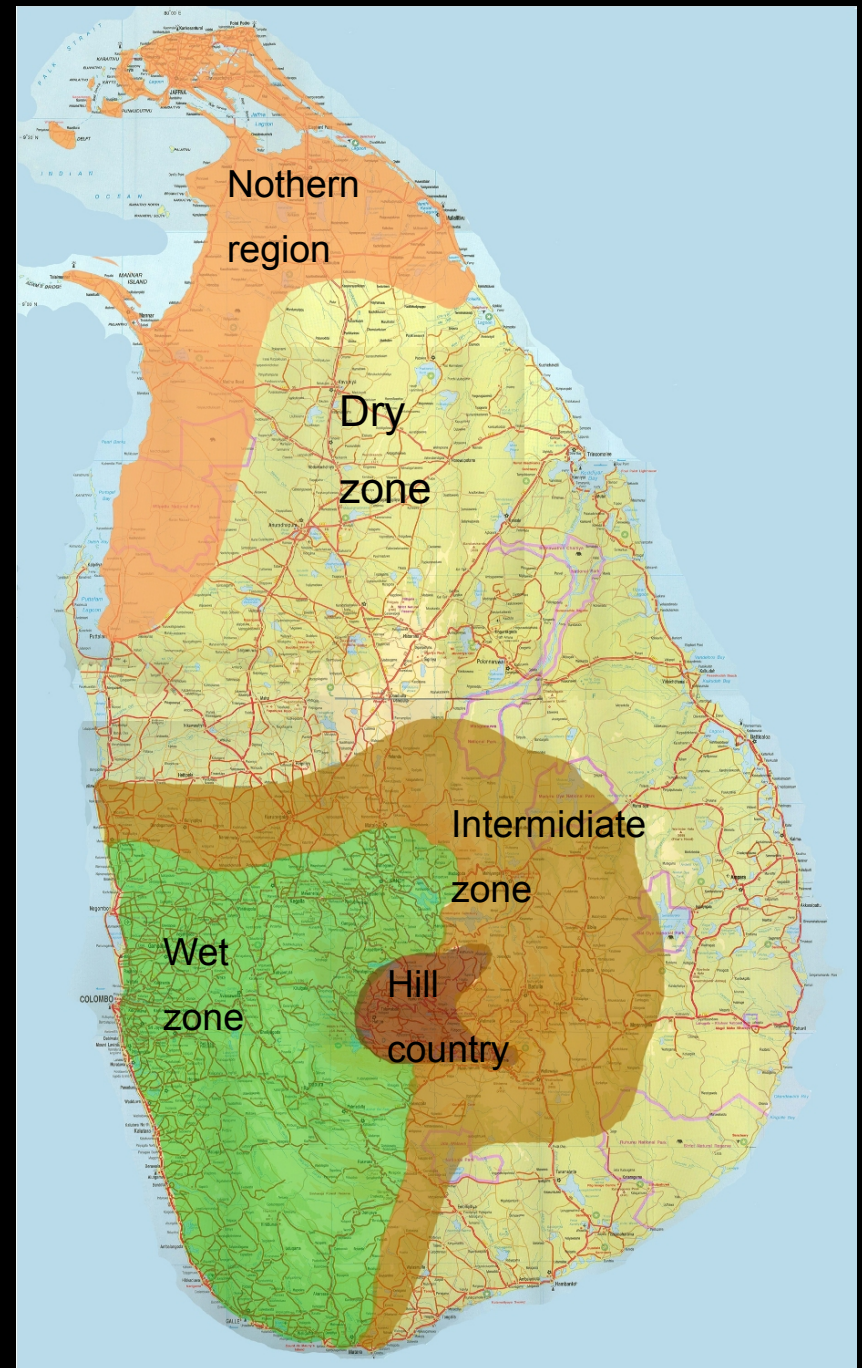
Difference between a Moth & a Butterfly

Moths



Distribution

- o Over 17,000 in world
- o 245 species in SL
- o 26 are endemic to SL



Life cycle of Blue Tiger



Egg



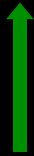
Larva



Pupa



Adult



Eggs

Has many shapes, patterns, colors and sizes

Microphyler pit – a small depression @ top



Common Mormon

o Eggs of
Papilionids



Common Rose



Blue Mormon

o Eggs of Nymphalids



Common Palm Fly



Plain Tiger



Joker



Tawny Coster



White Four ring

o Eggs of Pierids



Jezebel



Lemon Migrant



Common Grass Yellow



Common Gull

o Eggs of Hesperids



Giant Red Eye



Dark Palm Dart



Indian Palm Bob

Protective mechanisms of eggs

Tamil Yoeman



Protective mechanisms of eggs



Dark Cerulean



Baron



Gaudy Baron

Hatching



Glassy Tiger



Jezebel

Larva

o Three segments

Head

Thorax (3 sub segments)

Abdomen (10 sub segments)

o Head

Chitinous capsule

Chewing appendages

Simple eyes

o Thorax

3 pairs of jointed legs

1 pair of spiracles

o Abdomen

8 pairs of spiracles

5 pairs of pro legs

First meal of the larva



Blue Mormon

o Some larval food plants.....



පුවක්



ගොයම්



උඩවැඩියා



වෙලං



බෙඟ



කැටු ආන්නා



වරා

Foods of larvae

o Immature leaves



Lime Blue - යකි නාරන්



Sri Lankan Pale 6 Lineblue - මොර

Foods of larvae

o Mature leaves



Commander - කුඩුමිබේරිය



Gaudy Baron - පිලිල

Foods of larvae

o Flowers



Sri Lankan Hedge Blue - *Persicaria chinensis*

Monkey Puzzle - ඊන් මල්

Foods of larvae

o Fruits

Common Guava Blue - පුපුරු මහ



Foods of larvae

o Seeds



Indian Cupid - ඇන් උදුපියලිය



Pea Blue - අඩනනිරියා

Foods of larvae

o Aerial roots



Nilgiri Tit - උඩවැඩියා

Foods of larvae

o Other creatures



Apefly - පිටි මකුණා



Green's Silverline - කුඹි බිත්තර

Threats to larvae

Birds and other creatures
Parasites
Parasitoids
Cannibalism
Diseases



Diseased Common Palmfly

Threats to larvae



Egg laying by a fly on Blue Admiral



Pupae of a parasitoids on Sri Lankan Rose



Parasitoids feeding on Grass Demon

Protective mechanisms of larvae.....

o hiding

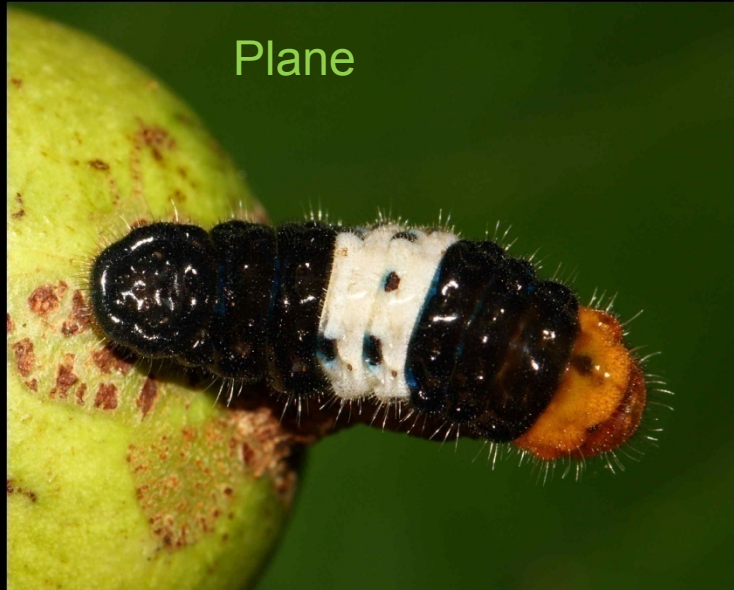


Red pierrot, in අක්කාරාන

Protective mechanisms of larvae.....

o hiding

Common Guava Blue



Protective mechanisms of larvae.....

o hiding



Philippine Swift



Golden Angle



Indain Awl King



Giant Red Eye

Protective mechanisms of larvae.....

o hiding the head



Common Indian Crow



Common Sailor



White Four Ring



Commander

Protective mechanisms of larvae.....

o Camouflage



Lime Butterfly



Common Mormon

Protective mechanisms of larvae.....

o Camouflage



Commander



Gaudy Baron

Protective mechanisms of larvae.....

o Camouflage



Banded Blue Pierrot



Monkey Puzzle



Protective mechanisms of larvae.....

o Camouflage



Apefly feeds on Mealy bugs
(පිටි මකුණා)



Baronet

Protective mechanisms of larvae.....

o Warning – weird look



Clipper



Peacock Pansy



Sri Lanka Tree Nymph



Common Indian Crow



Protective mechanisms of larvae.....

- o Warning – colors, proboscis



Common Rose



Mime

Protective mechanisms of larvae.....

o Warning – false head



Common Jay



Blue Mormon



Mime

Protective mechanisms of larvae.....

o Dew droplets of Pierids

Psyche



Plain Orange Tip

Protective mechanisms of larvae.....

o Relationship with ants



Common Tinsel - කොඩිය



Red Spot - දිමිය

Protective mechanisms of larvae.....

o Nocturnal behaviors



Chocolate Soldier



Peacock Pansy

Protective mechanisms of larvae.....



Tawny coster



Jezebel

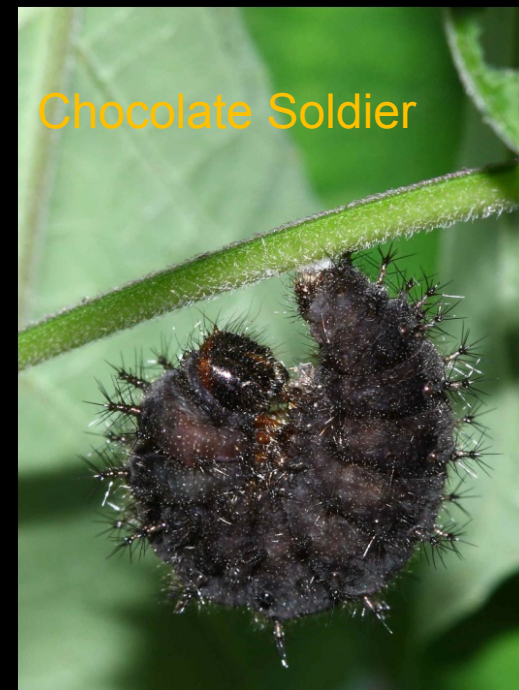
Getting ready for pupation



Lemon Migrant



Blue Mormon



Chocolate Soldier



Nawab

Pupation



Protective mechanisms of pupae

o Hiding



Plane



Common Hedge Blue



Protective mechanisms of pupae

o Hiding

Common Guava Blue



Indian Palm Bob



Pea Blue



Protective mechanisms of pupae

o Camouflage



Lemon Migrant



Protective mechanisms of pupae

- o Camouflage and hibernating



Spot Swordtail

Protective mechanisms of pupae

o Warning



Apefly



Common Mormon



White Royal

Protective mechanisms of pupae

o Warning

Common Indian crow



Blue Tiger



Dark Blue Tiger



Brown King Crow



Glassy Tiger

Getting ready to emerge from pupa.....



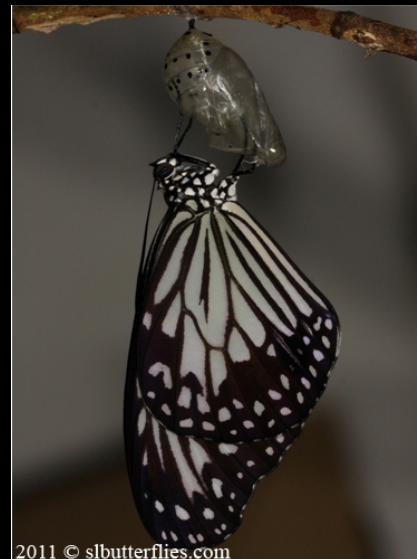
Three Spot Grass Yellow

Mottled Immigrant



Common Indian Crow

Emerging from pupa.....



Adult butterfly

Head – Pair of compound eyes
Pair of simple eyes
Proboscis
Pair of antennae

Thorax – 2 pairs of scaly wings
3 pairs of jointed legs
1 pair of spiracles

Abdomen – 8 pairs of spiracles
Mating appendages

Adult butterfly

Sexual dimorphism



female



male

Adult butterfly

Seasonal dimorphism



Dry season form



Wet season form

Size of the butterfly vary too according to prevailing environmental condition

Adult butterfly

Variations



Common Albatross female

Protective mechanisms of adult butterflies

o Camouflage



Blue Oak Leaf

Autumn Leaf



Protective mechanisms of adult butterflies

o Camouflage



Common Evening Brown



Blue Admiral

Protective mechanisms of adult butterflies

o Mimicry

King Crow



Double Branded Crow



Common Indian Crow



Brown King Crow



Protective mechanisms of adult butterflies

o Mimicry



Blue Glassy Tiger



Dark Blue Tiger



Mime



Blue Tiger



Glassy Tiger

Protective mechanisms of adult butterflies

o 'eye spots'

Peacock Pansy



Glad eye Bush Brown



Blue Pansy



White Four Ring

Protective mechanisms of adult butterflies

o 'eye spots'



Cornelian



Dark Cerulean



Large Oak Blue

Basking



Common Line Blue



Lime Blue



Common Silverline



Common Jay

Basking

Lemon migrant



female



male

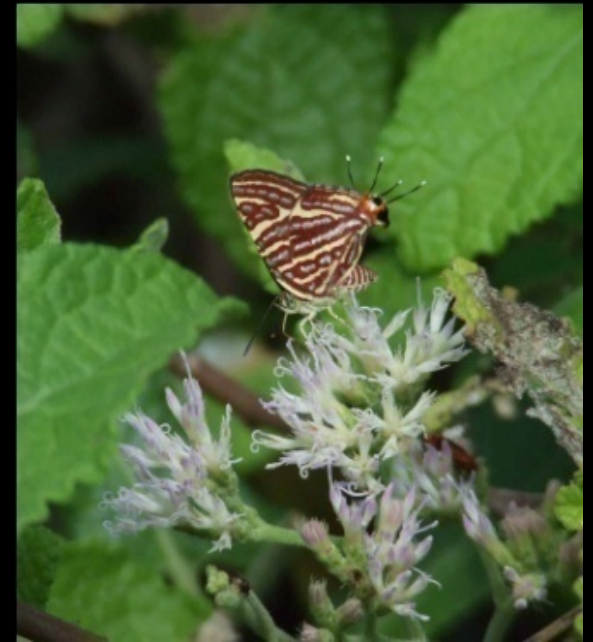
Feeding behaviors of adults.....

o Nectar

Jezebel



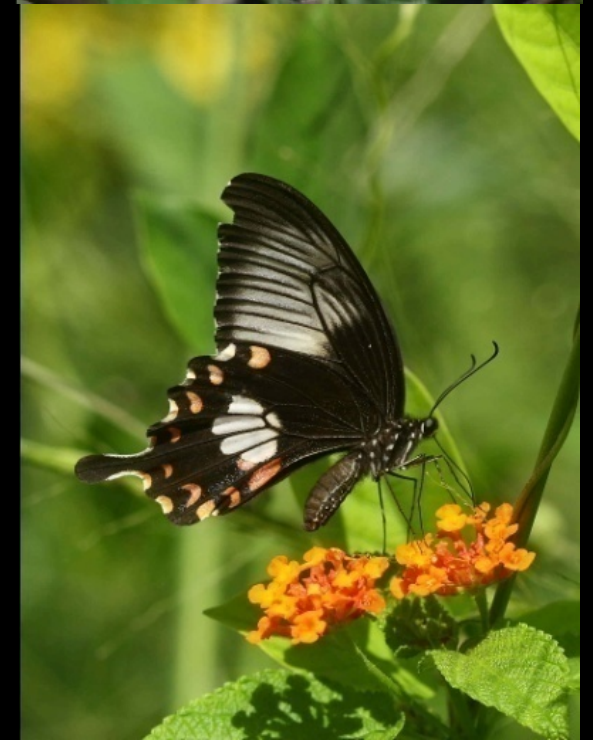
Long Banded Silverline



Hedge Hopper



Common Mormon



Feeding behaviors of adults.....

o Special Attractions.....



Grass Demon on ဝါးဆွတ်



Lesser Grass Blue on ငါးရိပ်



Common Banded Demon on ဝါးဆွတ်

Feeding behaviors of adults.....

o Mud Sipping



Blue Mormon



Common Jay



Five Bar Sword tail



Tamil Yoeman

Feeding behaviors of adults.....

o Sweat Sipping



Feeding behaviors of adults.....

o Fecal Matter



Banded Blue Pierrot



Lemon Migrant



Quaker



Little Branded Swift



Tri Colored Pied Flat

Feeding behaviors of adults.....

o Rotting Fruits



Black Rajah



Common Bush Brown



Dark Brand Bush Brown

Feeding behaviors of adults.....

o Tree Sap



Blue Admiral



Southern Duffer

Feeding behaviors of adults.....

o Dead animals



Common Hedge Blue & Malayan

Courtship & Mating

Prominent colors in males



male



female

Peacock Royal

Courtship & Mating

Sex brands in males



Stripped Pierrot



Double Branded crow



Plain Tiger



Common Indian Crow

Courtship & Mating

o Danoide for Danaids.....



Blue Tigers on අඬනනිරියා



Glassy Tigers and Crows on
අන් නොඬ

Courtship & Mating

o How do males & females meet?

Hill topping

Searching around L.F.P.

Waiting until meets



Blue Oak Leaf

Courtship & Mating



Great Orange Tip

Courtship & Mating



Tamil Yoeman



Common Grass Yellow

Courtship & Mating



Tiny Grass Blue



Small Cupid

Laying eggs

Lay on their larval food plants

On young shoots, leaves, flower buds, fruits, aerial roots, barks etc

Commonly seen in flushing season

A sticky liquid attach the egg to the plant

Lay eggs singly or in clusters

Eggs are not protected by adults

Where they lay eggs ?



Large Guava Blue, laying
on a fruit of **ඉඉරු මහ**



Pea Blue, laying
on flower
buds of **අඩනනිරියා**

Where they lay eggs ?



Yellow Pansy, laying on bare ground



Buttler's Spotted Pierrot, laying on leaf base of ପିଠିଆ (Pithia)

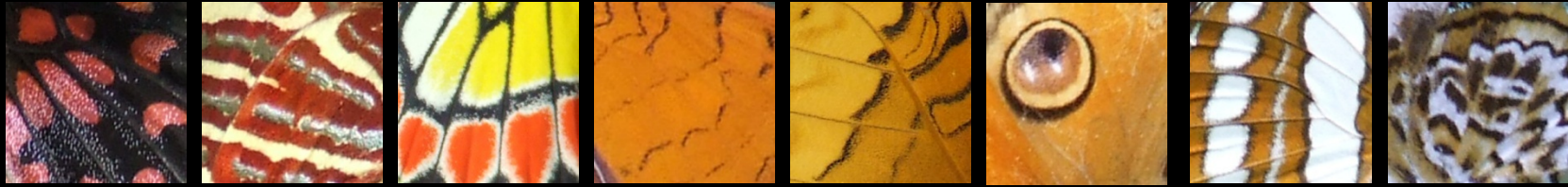
End of the life



Chestnut Streaked Sailor eaten
by a dragonfly



Common Grass Yellow eaten by a spider



Thank You !